

Instructions OPTIGEN'S TESTS

prcd-PRA & CEA

Instructions available on www.antagene.com/uk
(Update : April, 2009)

IMPORTANT

- saliva does not contain DNA: the inside of the cheek or the gums must be brushed in order to get fragments of tissue (cells)
- make sure the animal has not been eating or drinking for half an hour before sampling
- the sample must be authenticated by a sampler
- **the genetic test will be processed only if the sampling certificate is completely filled and if the payment is received.**

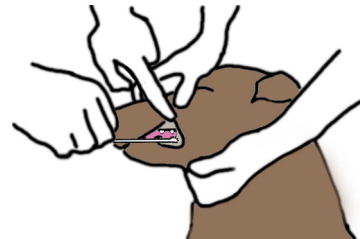
MATERIAL:

- a sampling certificate « ANTAGENE » (download on www.antagene.com)
- a sterile cytobrush
- a tube filled with ethanol (90° if possible)

1 Fill the Antagene's sampling certificate

with the following information:

- tube number
- animal identification number (tattoo or chip)
- genetic test requested
- owner's address
- veterinarian's address



2 Collecting the sample

- brush the inside of the cheek or the gums : firmly rotate the brush (for 20 seconds)
- cut or break the swab's stem and place the brush into the tube
- close the tube and check it does not leak
- place the tube in the small plastic bag (or protect it for postal service delivery)
- put samples, sampling certificates (filled and signed) in the envelope addressed to Antagene

3 Fill the Optigen's order form

Log on the Optigen's website (www.optigen.com)

- select "order test" in the menu
- clic on "online form : complete and submit the form online"
- print the proof of payment (payment only by credit card on Optigen's Website)
- join the proof to the envelope addressed to Antagene

DNA test is made by Optigen, the result is sent to the owners by mail

- Antagene sends the DNA extract to Optigen 2 times per month
- Optigen makes the genetic analysis
- Antagene advises and supports the breeders, clubs and veterinarians on these DNA tests.